

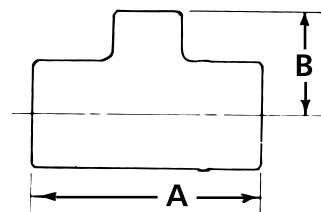
ACCESSORIES Copper Red Ring Monoflo® Fittings

Description

Copper Red Ring Monoflo Fittings let you use a single pipe to serve as both supply and return main.

Features

- Connect risers to the main, assuring proper diversion of water to each heating unit regardless of type and its position in the system.
- Recommended for most installations including cast iron non-ferrous base boards, free-standing radiation or convectors.
- Only one fitting is needed for most installations for adequate diversion for upfeed radiation. For most applications, a second fitting can be used if higher resistance is required.



Operating Data

Maximum Working Pressure: 150 PSIG (1,034 kPa)

Maximum Operating Temperature: 300°F (149°C)

Specifications

Part Number	Size Inches	Dimensions in Inches (mm)*		Cv Ratings**		Approx. Shpg. Wt. lbs. (Kg)
		A	B	1 FTG	2 FTG	
108119	3/4 x 1/2***	2 7/32 (56)	1 (25)	4.2	—	1/4 (0.1)
108120	1 x 1/2	2 9/16 (65)	1 5/32 (30)	14.5	8.7	1/2 (0.2)
108121	1 x 3/4	2 3/4 (70)	1 3/8 (35)			
108122	1 1/4 x 1/2	2 3/4 (70)	1 7/32 (31)	24.0	15.5	
108123	1 1/4 x 3/4	2 27/32 (72)	1 3/8 (35)			
108124	1 1/2 x 3/4	3 3/32 (78)	1 11/16 (42)	39.0	25.0	1-1/4 (0.6)
108125	1 1/2 x 1	3 3/8 (86)	1 11/16 (42)			
108126	2 x 3/4	3 1/2 (89)	1 27/32 (47)	80.0	55.0	1-3/4 (0.8)
108127	2 x 1	3 13/16 (97)	2 1/32 (52)			

* Do not use for construction. Dimensions are approximate and subject to change. Contact factory for certified dimensions.

** With Side Branch plugged.

*** Return only.

AIR SEPARATORS Inline Air Separator

Description

The B&G In-Line Air Separator is specifically designed to efficiently separate air from circulating water in hydronic heating and cooling systems to assure a quiet operation.

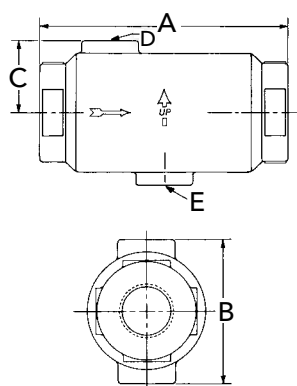
Operating Data

Maximum Working Pressure: 175 PSIG (1,207 kPa)

Maximum Operating Temperature: 300°F (149°C)

Materials of Construction

One Piece Cast Iron



Specifications

Model Number	Part Number	Size NPT	Max Flow (GPM)	Dimension in Inches (mm)					Approx. Shpg. Wt. lbs.	
				A	B	C	D	E		
IAS - 1	112118	1"	15	6 1/8	3 1/2 (89)	1 3/4 (45)	1/8 NPT	1/2 NPT	3 3/4	
IAS - 1 1/4	112119	1 1/4"	25	(156)					3 1/2	
IAS - 1 1/2	112097	1 1/2"	35	8 1/8	4 1/2 (114)	2 1/4 (57)	3/4 NPT		8 1/2	
IAS - 2	112098	2"	50	(207)					7 1/2	
IAS - 2 1/2	112099	2 1/2"	75	10 1/8	6-3/8 (257)	3 3/16 (81)			23	
IAS - 3	112100	3"	125	(257)					21 1/2	

Dimensions are approximate and subject to change. Contact factory for certified dimensions.